



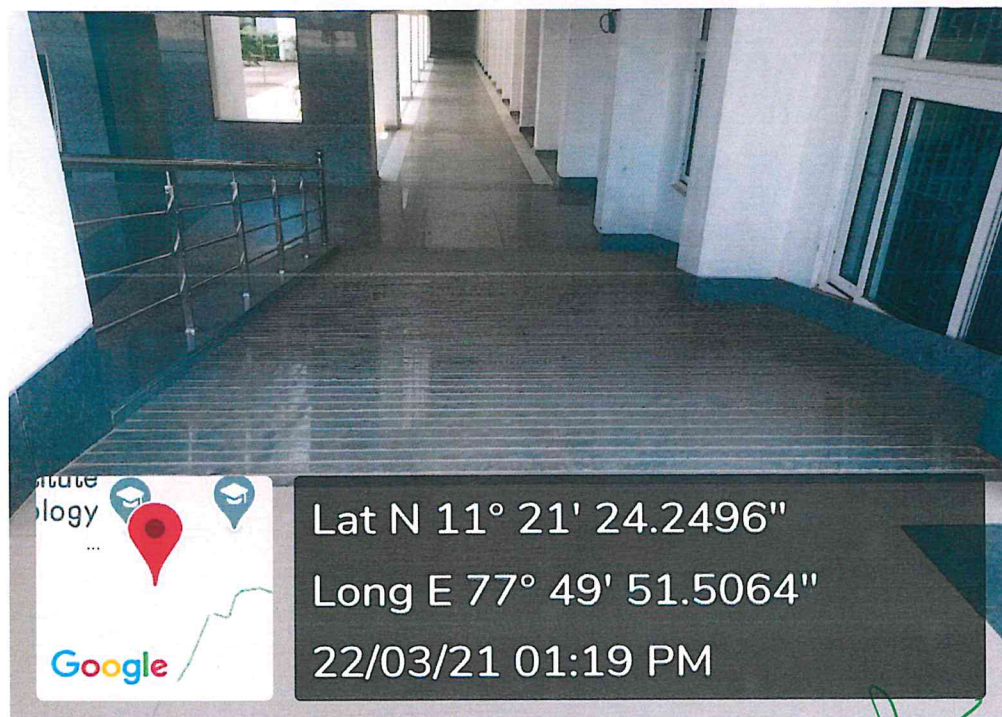
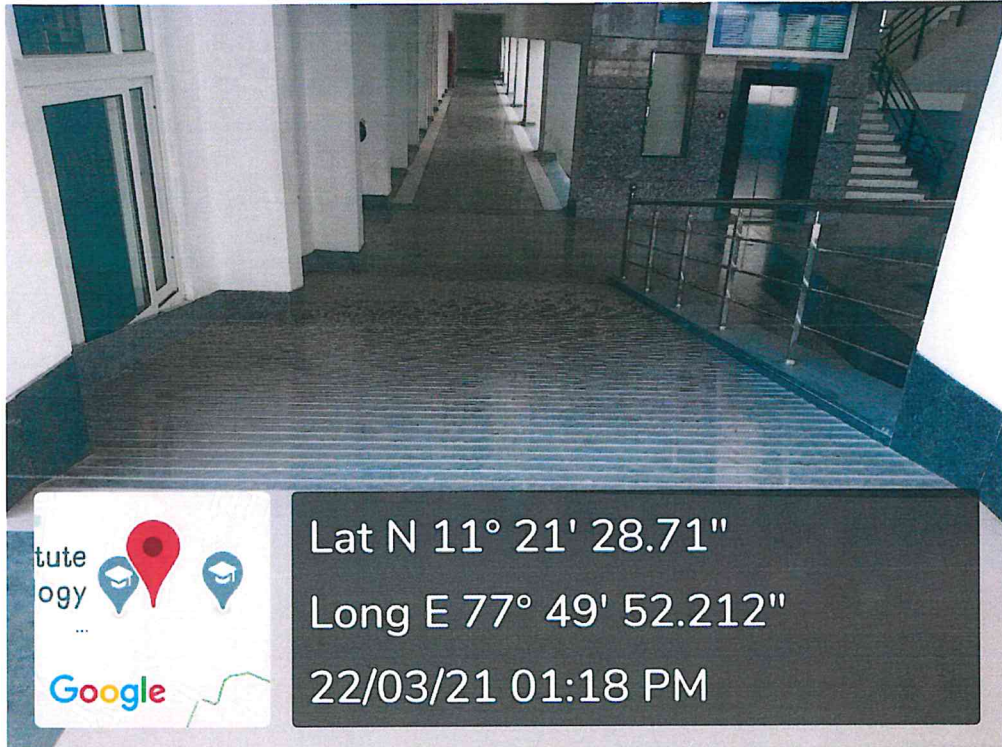
## 7.1.7 Disabled-Friendly, Barrier Free Environment

### Table of Contents

| S.No | Details   | Page .No. |
|------|---|-----------|
| 1.   | Photos-Ramps  | 1         |
| 2.   | Photos-Lifts  | 2         |
| 3.   | Photos-Disabled friendly washrooms & display boards | 3         |
| 4.   | Photos-Signpost                                     | 4         |
| 5.   | Photos-Mechanized equipment                         | 5         |

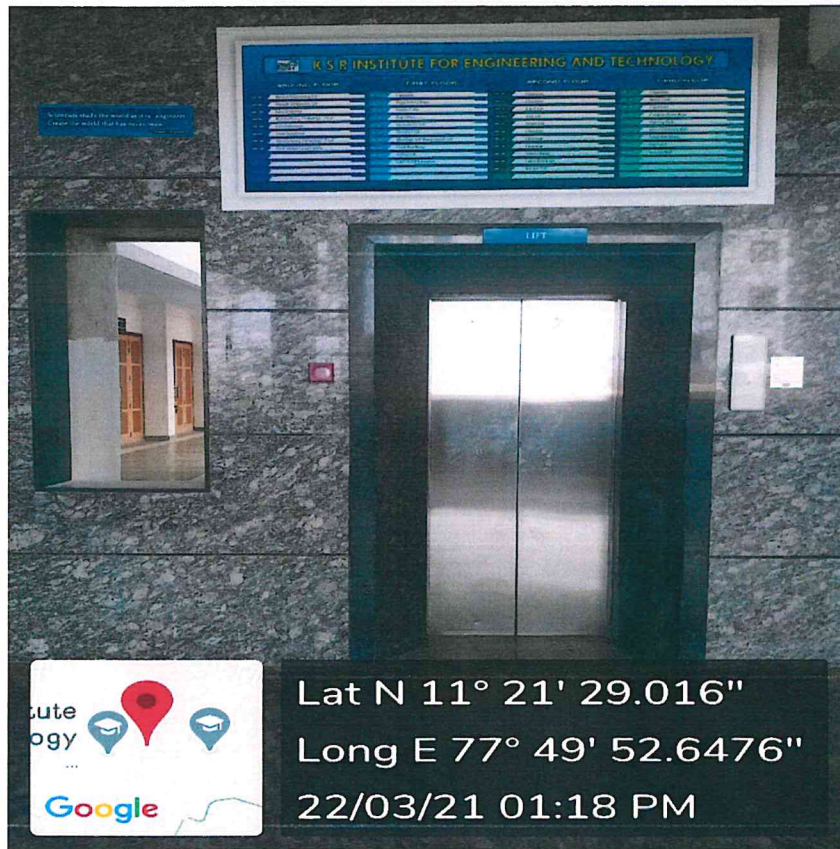
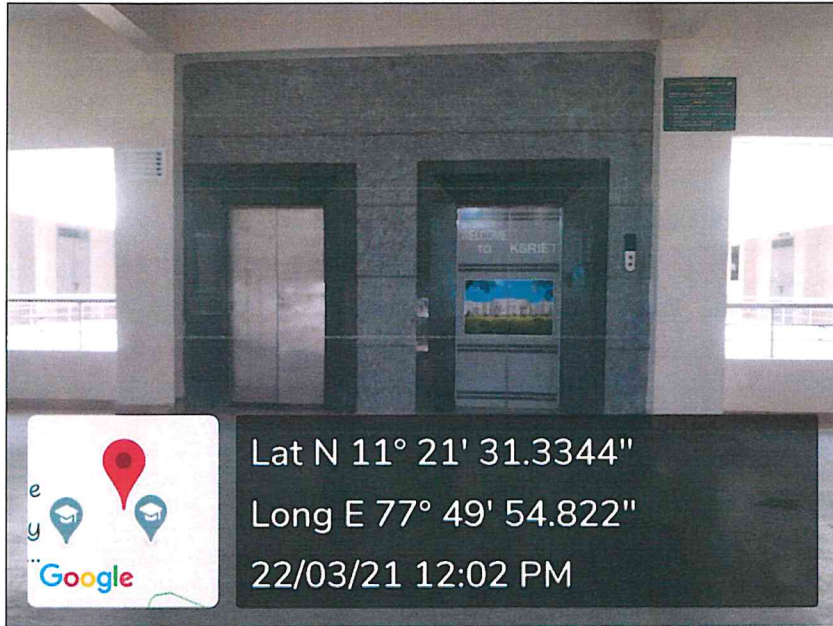
**BUILT ENVIRONMENT WITH RAMPS/LIFTS FOR EASY ACCESS TO CLASSROOMS**

**RAMPS**



**PRINCIPAL.**  
**K. S. R. INSTITUTE FOR**  
**ENGINEERING AND TECHNOLOGY,**  
**K. S. R. KALVI NAGAR,**  
**TIRUCHENGODE-637 215,**  
**NAMAKKAL Dt, TAMIL NADU.**

## LIFTS



  
PRINCIPAL,  
K. S. R. INSTITUTE FOR  
ENGINEERING AND TECHNOLOGY,  
K. S. R. KALVI NAGAR,  
TIRUCHENGODE-637 215,  
NAMAKKAL DI. TAMIL NADU.

**DISABLED-FRIENDLY WASHROOMS**



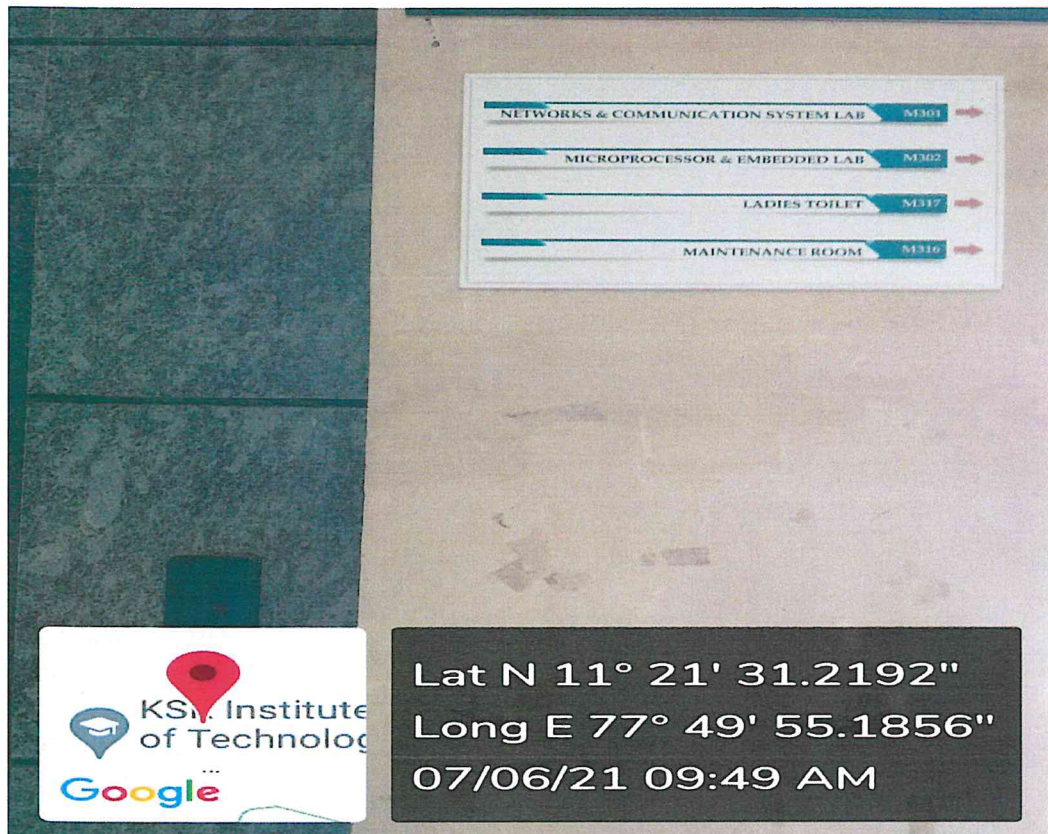
**SIGNAGE INCLUDING TACTILE PATH, LIGHTS, DISPLAY BOARDS AND  
SIGNPOSTS  
DISPLAY BOARDS**



PRINCIPAL,

K. S. R. INSTITUTE FOR  
ENGINEERING AND TECHNOLOG  
K. S. R. KALVI NAGAR,  
TIRUCHENGODE-637 215,  
NAMAKKAL Dt. TAMIL NADU.

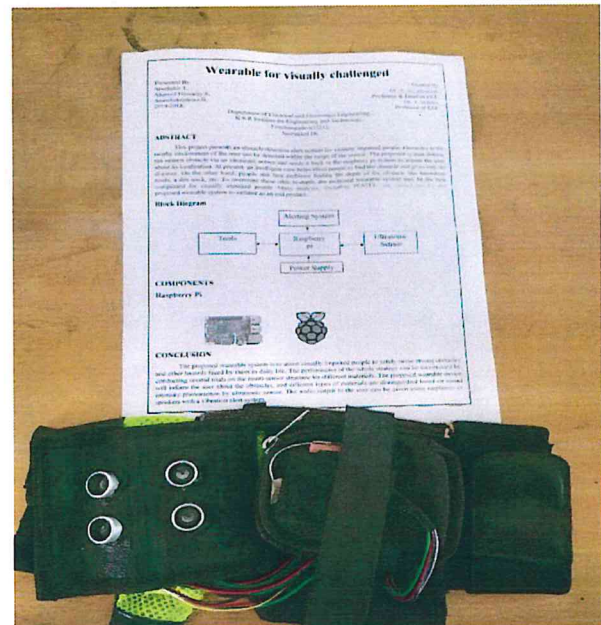
# SIGN POSTS




PRINCIPAL,  
 K. S. R. INSTITUTE FOR  
 ENGINEERING AND TECHNOLOGY,  
 K. S. R. KALVI NAGAR,  
 TIRUCHENGODE 637 215,  
 NAMAKKAL Dt. TAMIL NADU.



**MECHANIZED EQUIPMENT**



Automatic stretcher for disabled person    Wearable device for visually challenged person

  
**PRINCIPAL,**  
**K. S. R. INSTITUTE FOR**  
**ENGINEERING AND TECHNOLOGY,**  
**K. S. R. KALVI NAGAR,**  
**TIRUCHENGODE-637 215,**  
**NAMAKKAL Dt. TAMIL NADU.**